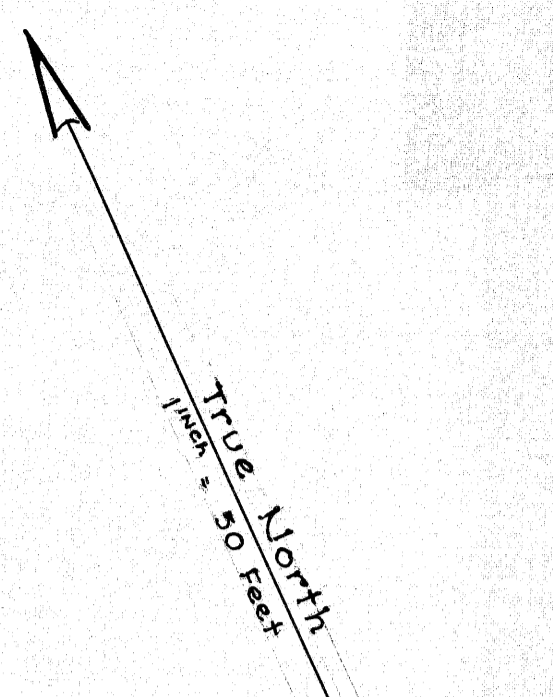


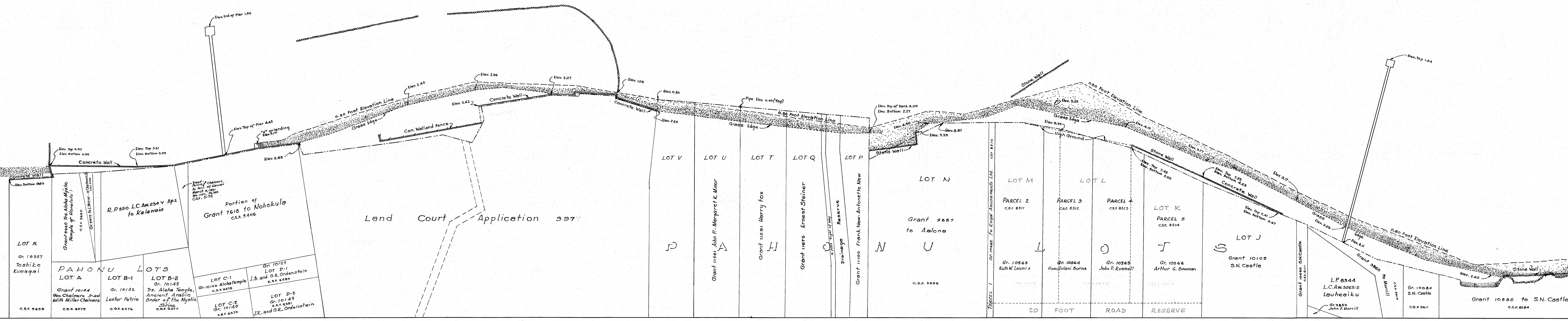
SEA

SEA



WAIMANALO BEACH PARK "C"
Executive Order 437

WAIMANALO BEACH PARK "E"
Executive Order 437



← To Kailua Junction

KALANIANA'OLE

HIGHWAY

To Makapuu Head →

WAIMANALO RESIDENCE LOTS
1st SERIES

4	3	2	1
---	---	---	---

WAIMANALO HOUSE LOTS
BLOCK 3

1	2	3	4	5	6	7
8	9	10	11	12	13	14

WAIMANALO HOUSE LOTS
BLOCK 4

1	2	3	4	5	6
7	8	9	10	11	12

WAIMANALO HOUSE LOTS
BLOCK 5

1	2	3	4	5	6	7	8	9	10	11	12	13	14	15	16
---	---	---	---	---	---	---	---	---	----	----	----	----	----	----	----

WAIMANALO HOUSE LOTS
BLOCK 6

1	2
---	---

HAWAII TERRITORY SURVEY
A. Lester Marks, Surveyor
PORTION OF WAIMANALO BEACH
Showing Coastline and Improvements
Survey by John K. McCandless
November 1948
Survey made for Board of Harbor Commissioners
Traced from Reg. Map 4018
by J.S. Carter