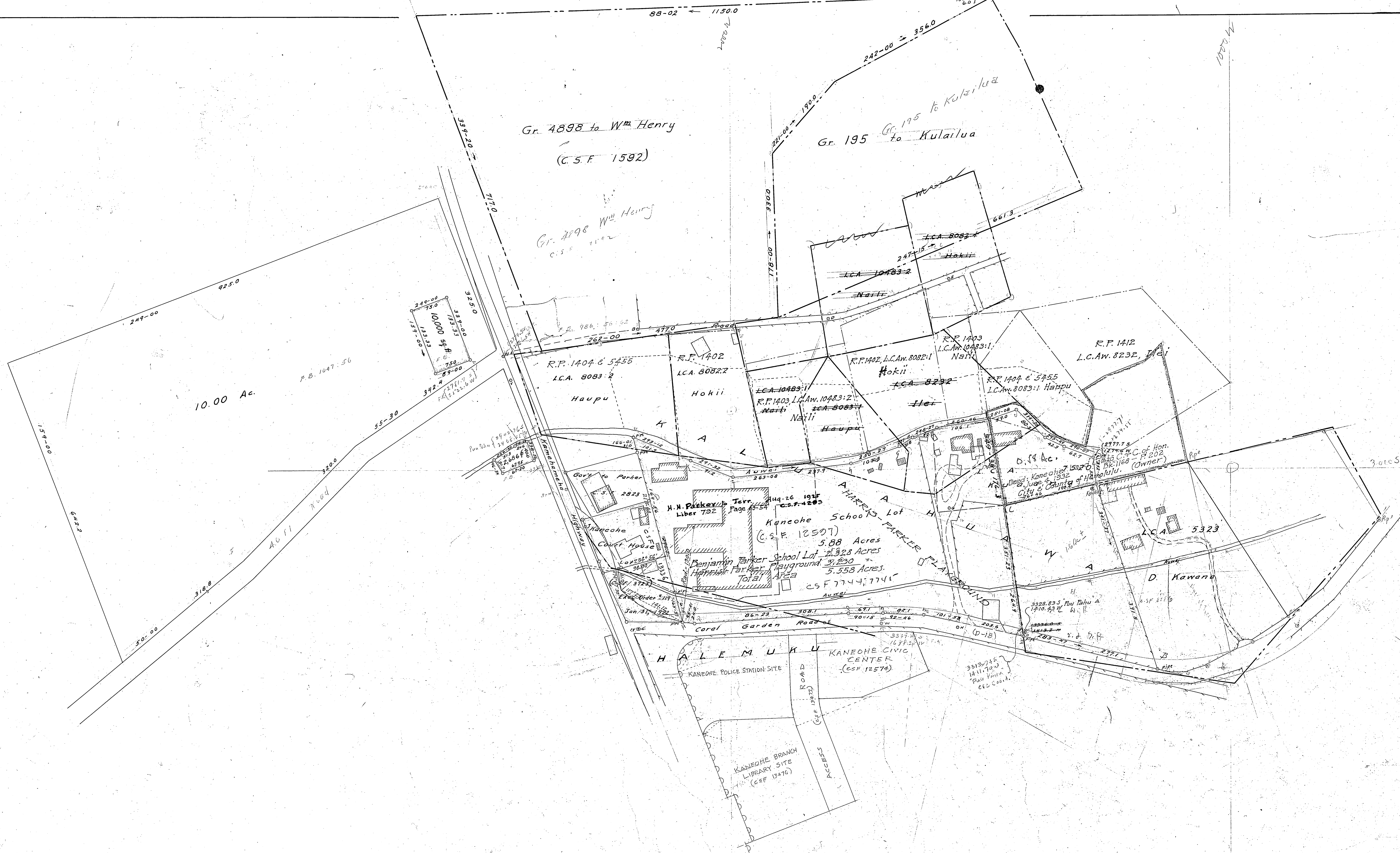


True North

Scale 1 in = 100 ft



NOTE
 Kuleanas in blue by Wright, Harvey & Wright - surveyed in 1920.
 Revised Coordinates referred to "Pu'u Pahu" & from Survey in Feb. 1936.
 Sec: P.B. 1324-P. 11, Calc: B. 26-P.M.D. P. 118.

HAWAII TERRITORY SURVEY
 WALTER E. WALL, SURVEYOR
KANEOHE SCHOOL LOT
 New - 1924
 KALUAHAHUAWA & HALEMUKU, KANEOHE, KOOLAUPOKO, OAHU
 From Survey of T.J.K. Evans and F.H. Kanahale
 Map by F.H. Kanahale - Jan., 1924
 Scale 1 inch = 100 feet

F.B. No. 986 pages 56-62 T.J.K.E.
 F.B. No. 1047 " 56-59 A.S.C.
 F.B. No. 1072 " 23-28 F.H.K.
 CALC. B.K. NO. 1 F.H.K.
 Coordinates referred to "Pu'u Pahu" (A.C.A.)

REG. MAP
 NO. 2710