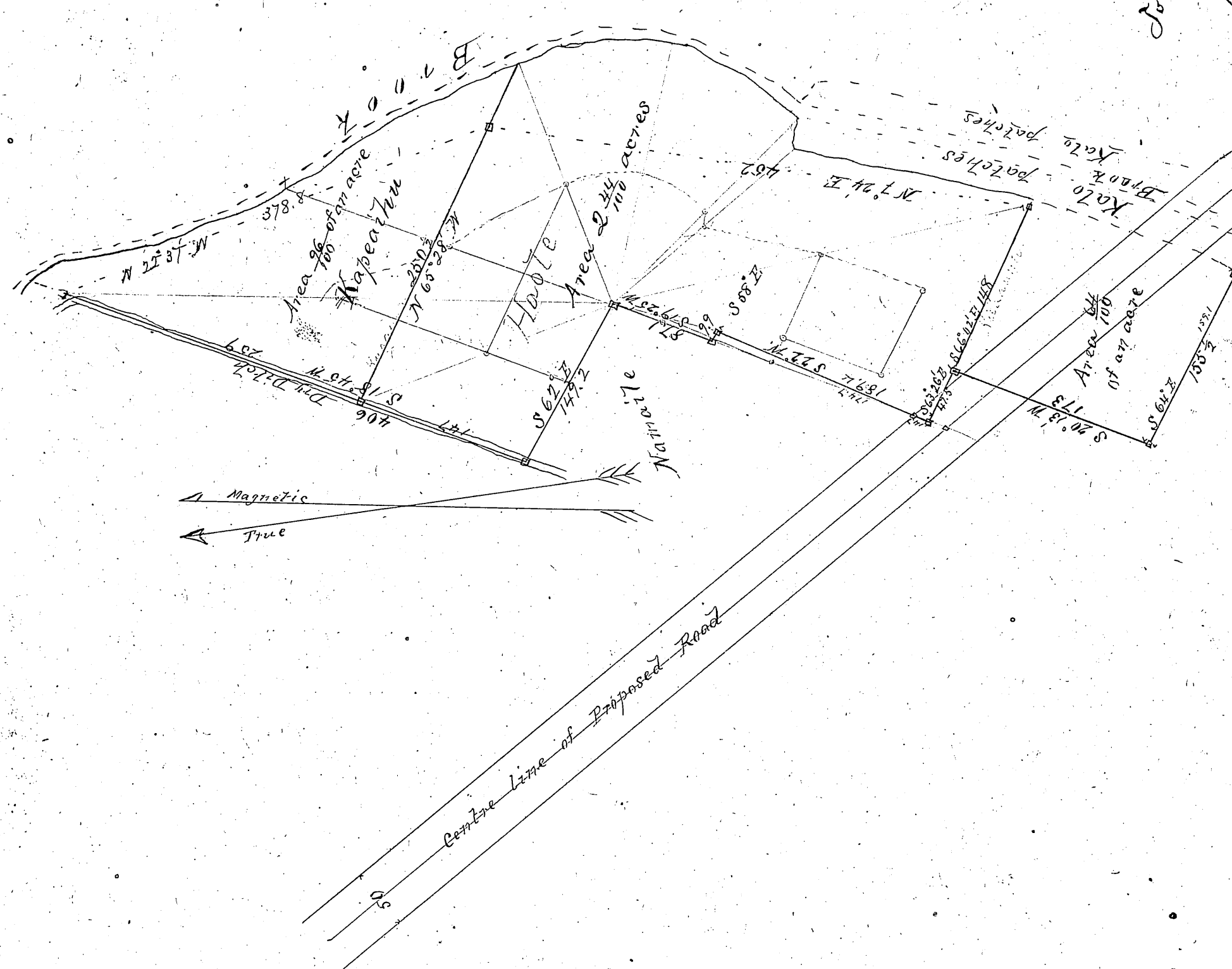


2-7-36

# 120 =  
8 September 1873



Total area 4.7/100 acres

3174  
Poke (w)  
Sep. 1877

Plan of The Aina o Haole  
Waikiki Honolulu Oahu

Scale: 100 ft to an inch  
J.S. Emerson, Surveyor  
Aug 8 1877

AINA O HAOLE, WAIKIKI  
Oahu.  
J.S. Emerson

HAWAIIAN GOVERNMENT SURVEY.	
Register No.	254
Drawer	15
Number	22