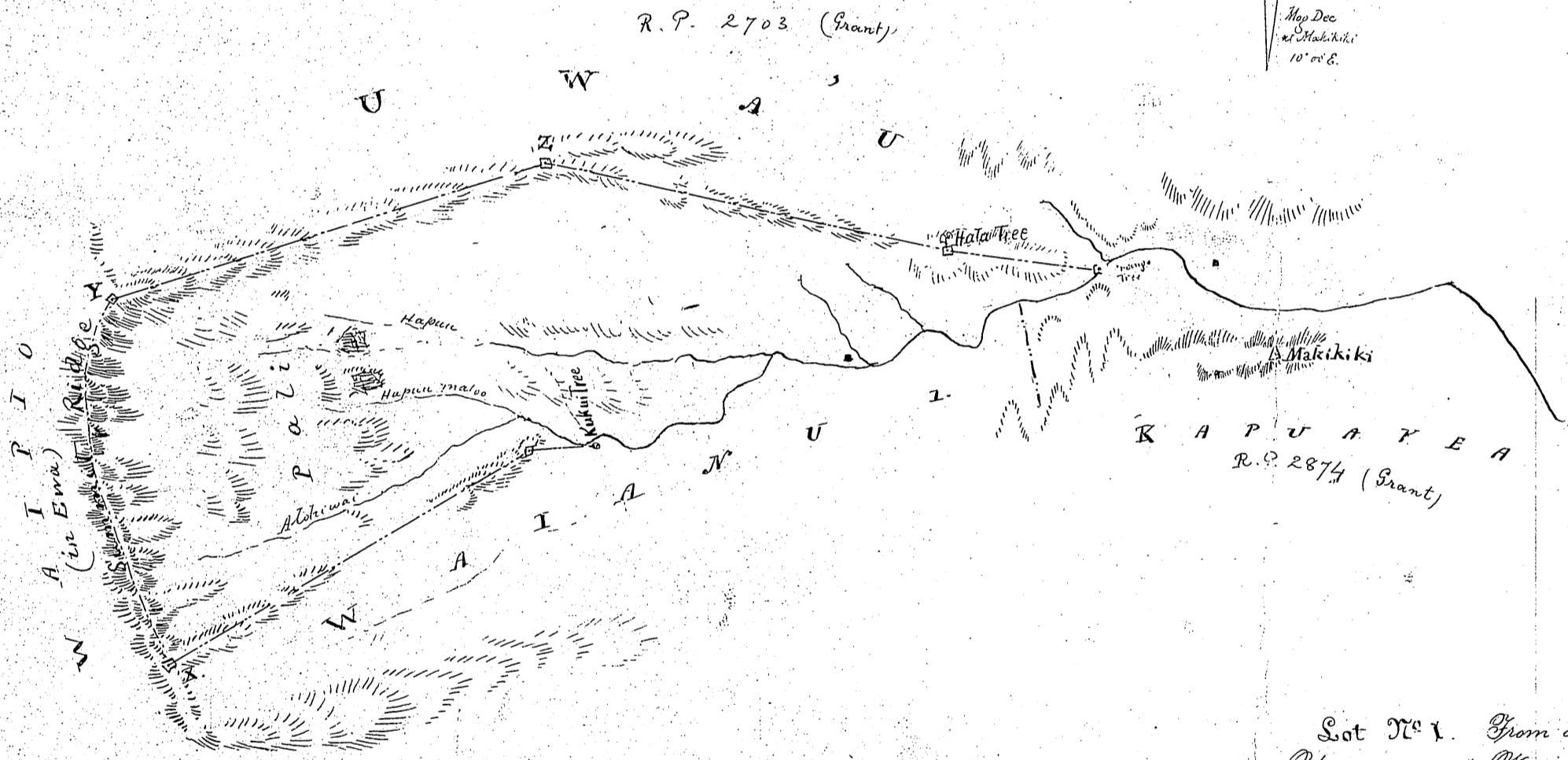
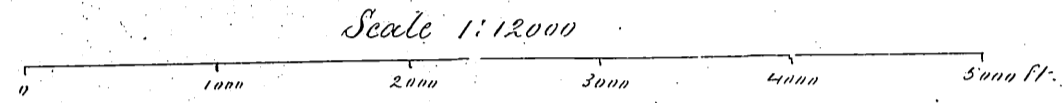
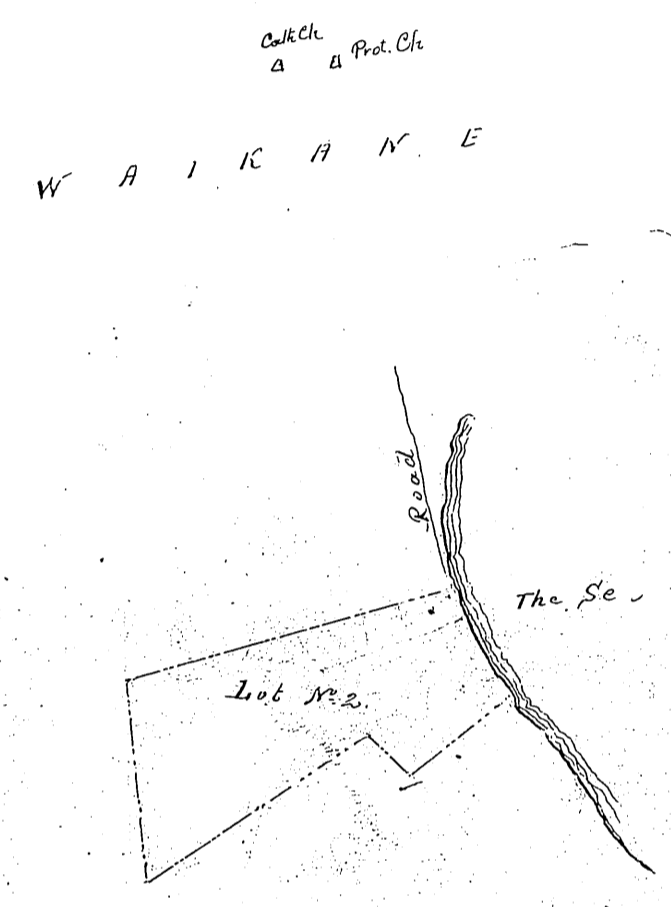


WAIANU II.

An Ili of Waiahole, Koolau-poko, Oahu, awarded by
 Land Commission to Puaki, No. 5936. Records 10:632.
 Surveyed for Sawyer.



R.P. 6987. Oct 16 1877
 Cullen bot a look out
 m. No 1.



Copy 1874
 Sawyer
 Commission of Survey
 Oahu

- Lot No. 2. From a point on the seabeach, whence are observed the following azimuths from a true meridian South, viz: Alokapu Station 286°45', Haena do. 329°20', Makikiiki 75°08', Makiki (highest point) 220°20', run as follows, all bearings being from a true meridian (mag. var. 10°30' E. 1874):
1. N. 58°30' W. 100 feet to summit.
 2. S. 72°00' W. 1,228 feet along boundary of Onouli & R.P. 4380 LL.
 3. S. 8°30' E. 888 feet.
 4. N. 55°40' E. 925 feet, along Crown Land.
 5. ~~S. 40°50' E. 455 feet.~~
 6. S. 40°50' E. 455 feet.
 7. N. 53°50' E. 615 feet along East Land.
 8. N. 24°35' W. 632 feet along seabeach to initial point.
- Area $31 \frac{5}{100}$ acres.

C. J. Lyons

Description
 Lot No. 1. From a rock near an Orange Tree just above the junction of the Uluau and Waianu Gulches, said rock bearing from the Makikiiki triangulation Station N. 68° W. true, distant 1290 ft., run up the middle of Waianu Stream to a point by a marked Kukui tree, which tree is S. 72°35' W. true, 3540 feet from the initial point; thence and from said Kukui tree, S. 87°00' W. true, 450 feet to the ridge above; thence up said ridge S. 61°12' W. 2800 feet along Waianu I. to a point marked X on the Government Survey Map, which point, being on the summit ridge, bears S. 76°20' W. true, from above-mentioned Makikiiki Station, thence along the summit ridge dividing this land from Waipio on Ewa, N. 6°15' W. true, 2450 feet, to a point marked Y on Government Survey, and bearing N. 85°40' W. true, from Makikiiki as above; thence down the sharp spur of mountain, along the boundary of Uluau N. 74°10' E. true, 3020 feet, to point Z, bearing from Makikiiki N. 73°40' W. true; thence down a branch spur of this last S. 46°15' E. true, 2760 feet to a Kala tree, and S. 81°00' E. true, 1020 feet to initial point as by survey made by C. J. Lyons on 1873. Area 22.5 Acres.

C. J. Lyons
 June 1874.

N.B. This is a new map from original draft, made to replace the copy destroyed in the fire of Feb. 12, 1874.

see Prov. Memoranda

WAIANU II Waiahole, Oahu
 C. J. Lyons 1874

HAWAIIAN GOVERNMENT SURVEY	
Register No.	63
Drawer	17 N
Number	1