

True North

Approved:

C. J. Query
Commissioner of Public Lands

Walter H. Wall
Surveyor, Territory of Hawaii

E. P. Poonis
Engineer, Estate of B.P. Bishop

Honolulu, T.H.
March 31, 1921.

Boundaries by:

Jas. B. Mann
Engineer, Estate of B.P. Bishop

Verified by:

H. C. Newton
Assistant Government Surveyor

M A U N A L U A

Apana 30, L.C.A. 7713, R.P. 4475 to Victoria Kamamalu
Boundary Certificate No. 78

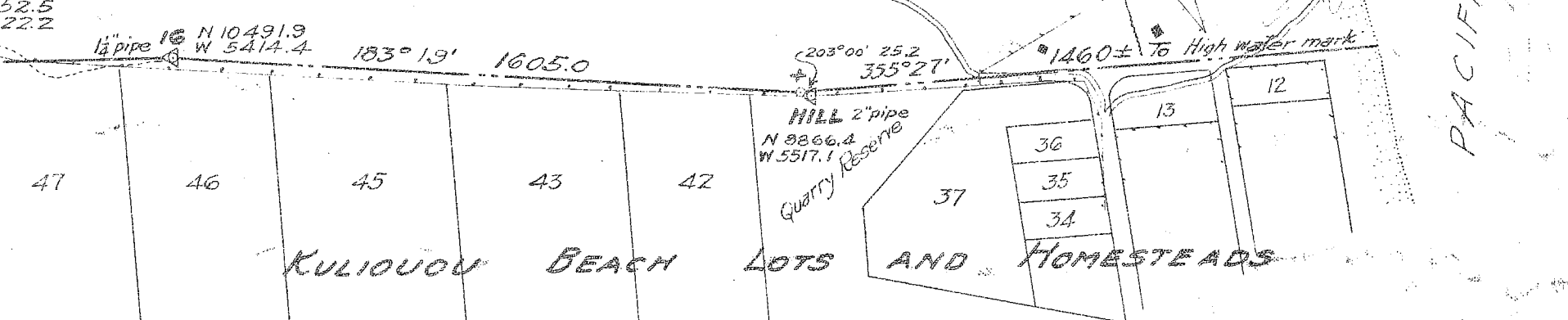
Estate of B.P. Bishop, Owner

WAIMANALO
Crown Land

Boundary of ridge between points 1 and 13
Top of Ridge
183° 00' 1963.7
139° 00' 1077.5
157° 48' 1772.3
160° 59' 1267.0
160° 12' 810.4
159° 14' 1102.5
178° 55' 1680.5
183° 13' 1605.0

K U L I O U O U
Crown Land

K U L I O U O U F O R E S T R E S E R V E



Kuapa Pond

PACIFIC OCEAN

B.P. BISHOP ESTATE
SHOWING BOUNDARY BETWEEN
ILI OF MAUNALUA
AND
KULIOUOU 2
ISLAND OF OAHU
Scale - 1 inch = 400 feet Feb. 1921
Survey and map by Jas. B. Mann
Origin of coordinates - "KOKO" Δ