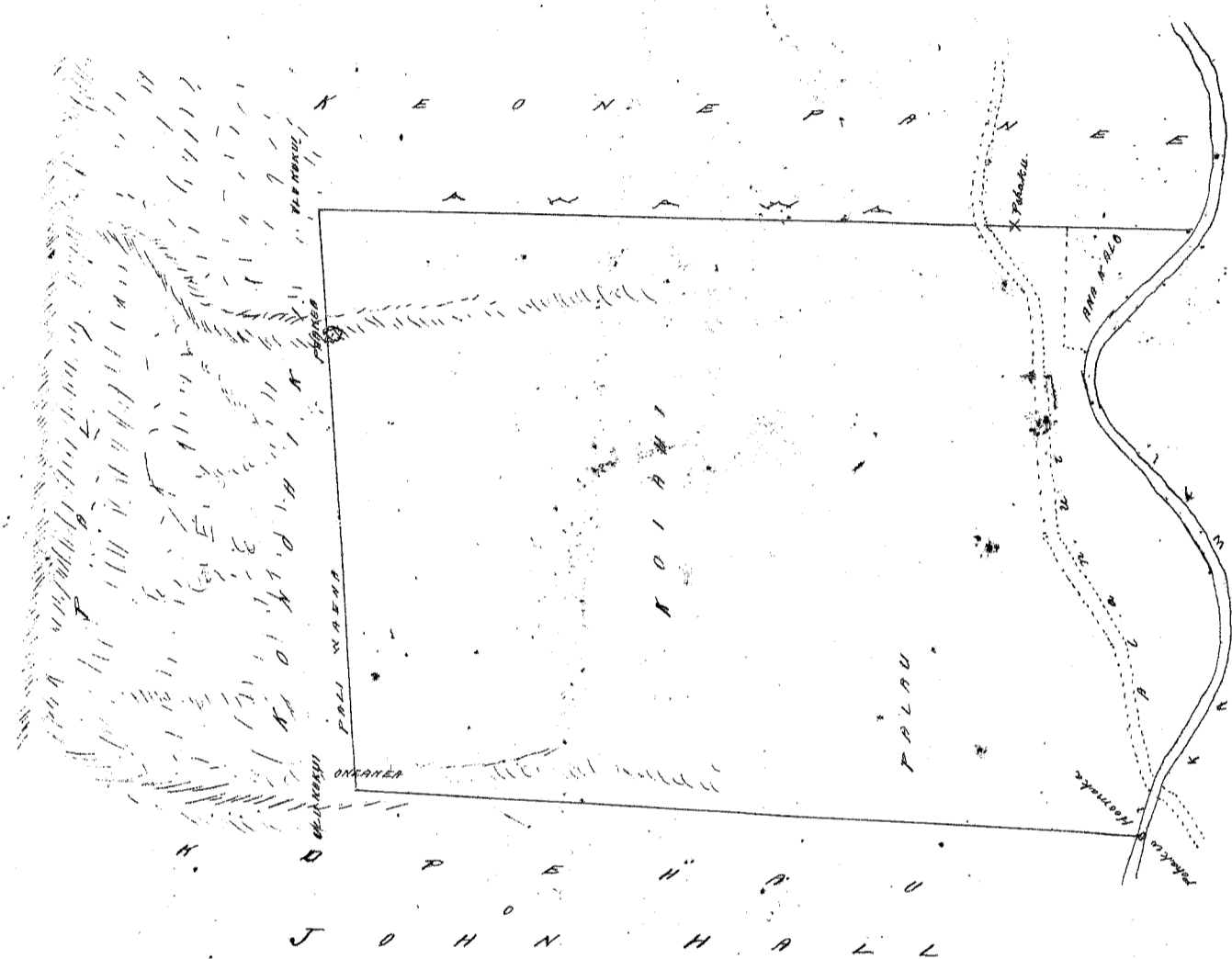


Mo Mokaua, Kalihii, Kona, Oahu.

10 Loi Kalo & Kula i Palau ma Koihii. E hoomaka maka pohaku miu ma Kahawai, ke Keki
Kema no keia aina, e pili ana me "Kupukau," no John Hall, - A e holo Akau 40° Kom. 17 3/4 Kaulahao e pili ana
me ka aina o John Hall a hiki i waena o ka lihi Kukuia me ka lihi oiaena maka pali waena, - Alaila Akau 44
Kikina 13 1/2 Kaulahao hele ma ka pali waena e kupono ana i kekahi pohaku papaakea me Konoiki a hiki i ka
hapalua o ke awaawa e pili ana me Keonepane, - Alaila Kema 42° Kikina 20 3/4 Kaulahao e iko ana ilalo ma
ka hapalua awawa me Keonepane e kau ana maluna o kekahi pohaku i hooitonawa x makai o ke Alamui Kihoke
i ka aina Kalo ahiki i Kahawai, - Alaila holo ika ma Kahawai a hiki i ka hoomaka ana.

Eia ka Ili 26 Eka

J. P. Kalamo
ama Aina



Ukupauloa

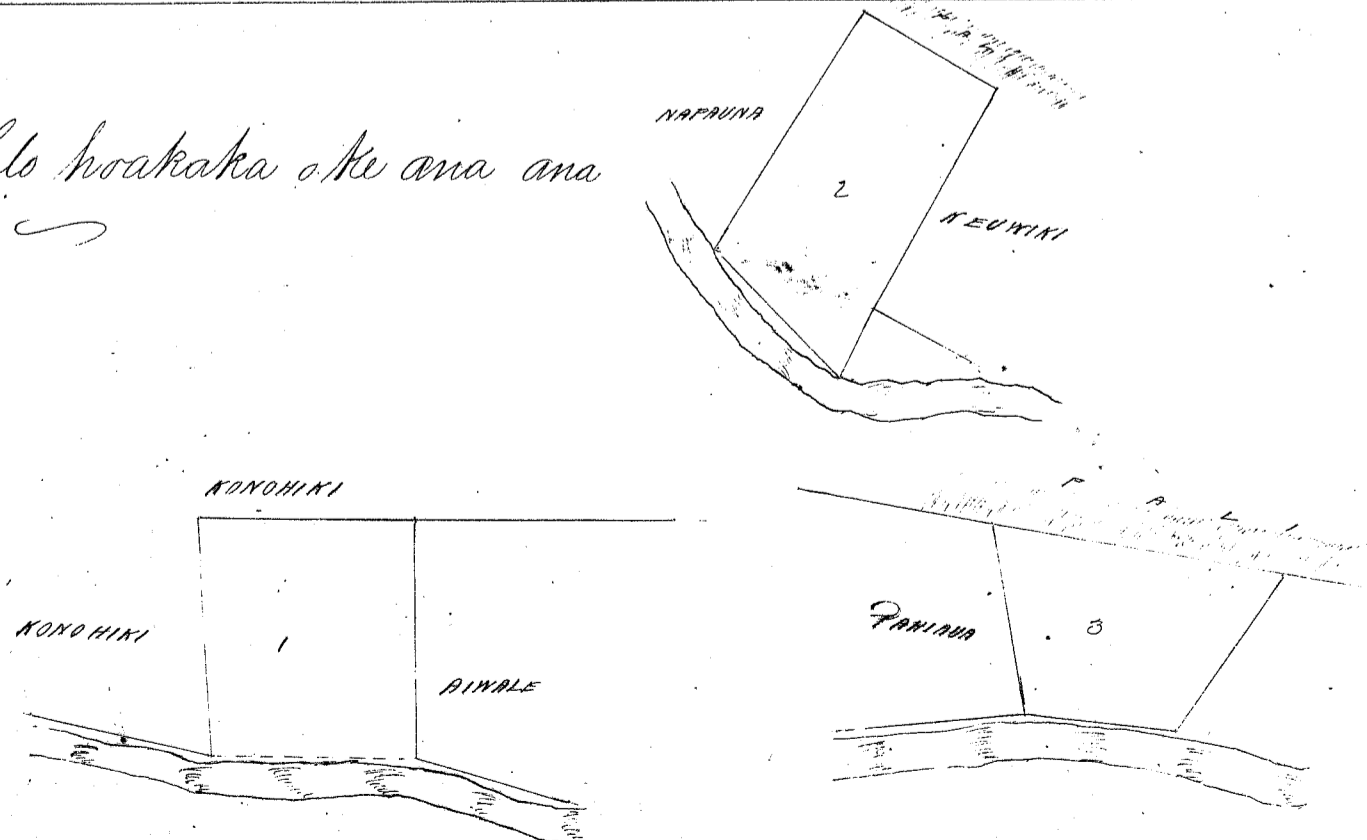
P. S. C.

W. L. Lee
G. M. Robertson
J. H. Smith
I. K. Kaulahao

Honolulu October 11, 1853.

Heleu 7385 Kalahoouka

Maana i ka olelo hoakaka o ke ana ana
ma Kela Awa 402.



Ukupauloa

W. L. Lee

G. M. Robertson

J. H. Smith

Honolulu October 8, 1853.