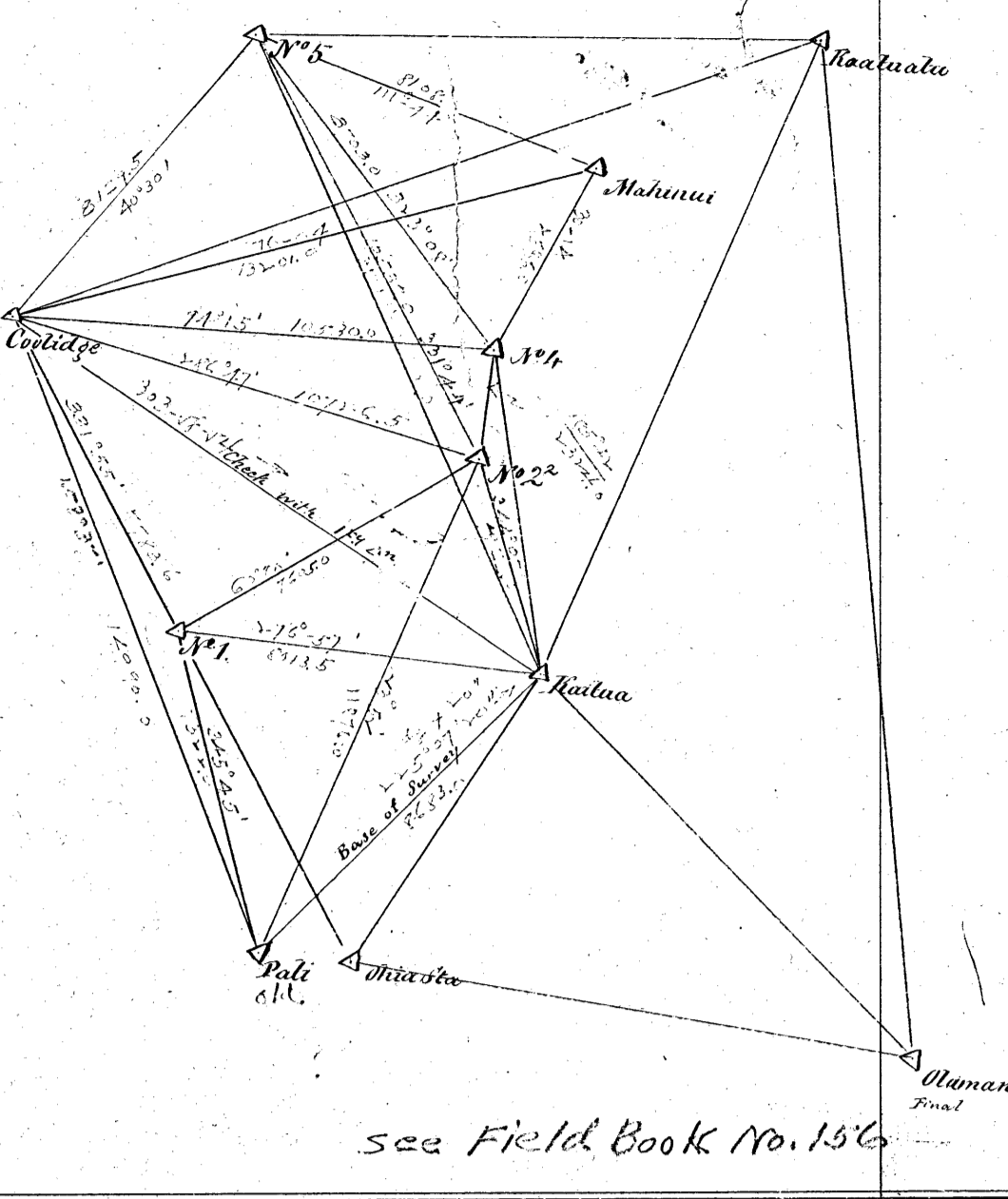


KANEOHE

OAHU.
With
WEST KAILUA

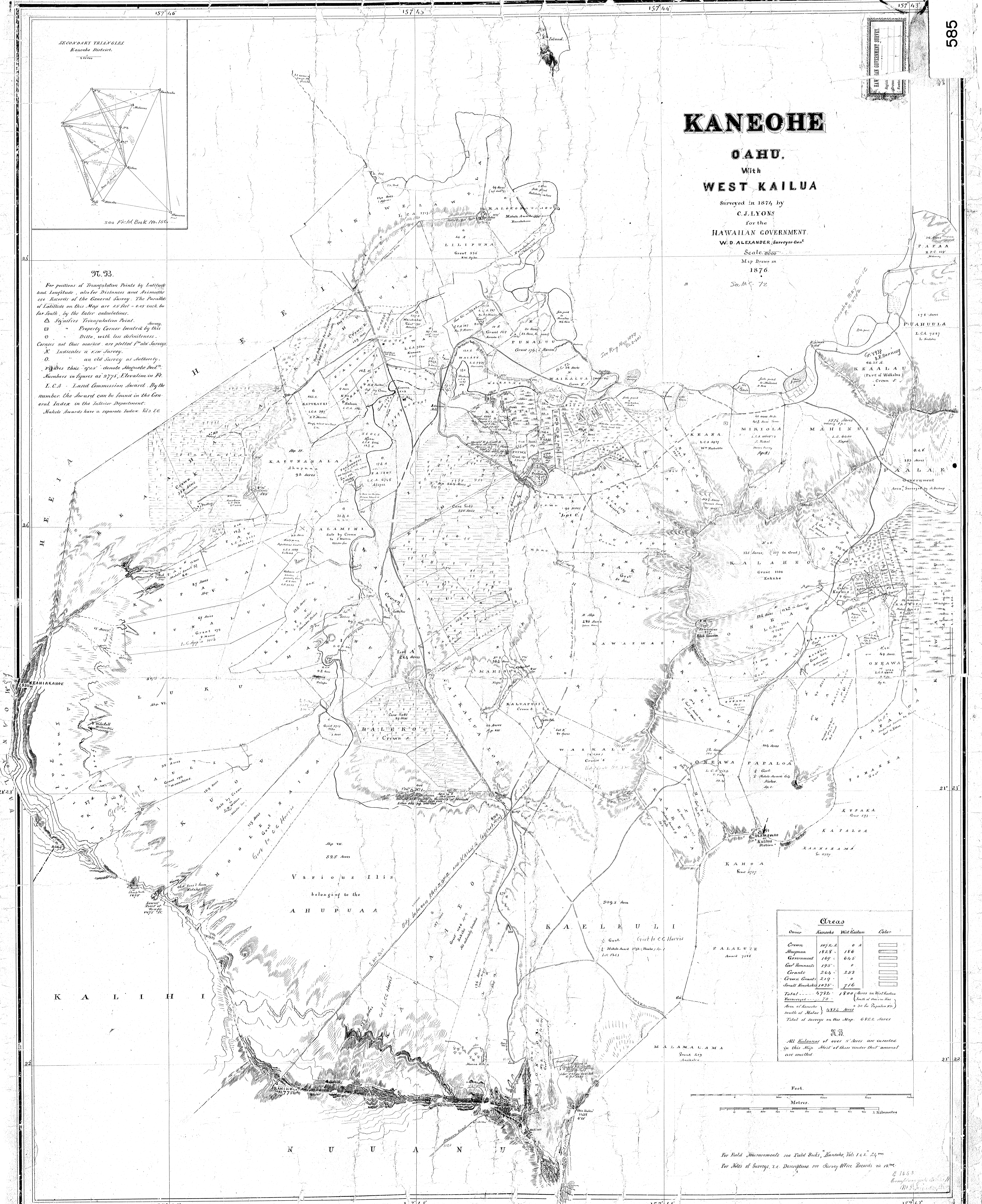
Surveyed in 1874 by
C. J. LYONS
For the
HAWAIIAN GOVERNMENT.
W. D. ALEXANDER, Surveyor-General.
Scale, 2000
Map Drawn in
1876
See Map No. 72

SECONDARY TRIANGLES
Kaneohe District.



97.33.

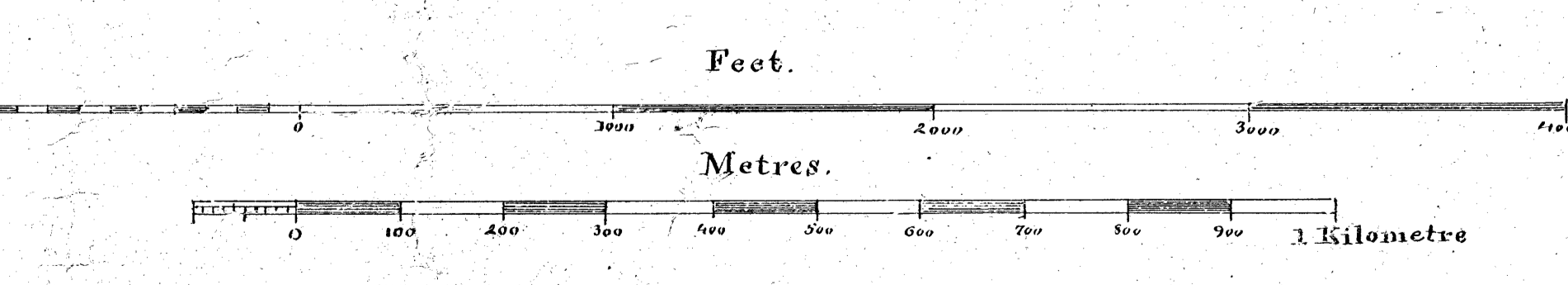
For positions of Triangulation Points by Latitude and Longitude, also for Distances and Azimuths see Reports of the General Survey. The Parallel of Latitude on this Map are 25 feet - 0.03 inch too far South, by the later calculations.
△ Signifies Triangulation Point.
□ Property Corner located by this
○ Ditto, with less definiteness.
Corners not thus marked are plotted from old surveys.
X Indicates a new Survey.
O " an old Survey as Authority.
Numbers thus "925" denote Staquette feet.
Numbers in figures as 2775, Elevation on Pt. I. C. A. - Land Commission Award. By the number, the Award can be found in the General Index in the Interior Department.
Makaha Awards have a separate Index. Vol. 20.



Various Ilis
belonging to the
AHUPUAA

Class	Kaneohe	West Kailua	Other
Crown	1072.0	0.0	
Alupuaa	182.8	156	
Government	169	64.5	
Govt Remnants	195	0	
Grants	264	253	
Crown Grants	219	0	
Small Holdings	1035	716	
Total	4795	1800	1800 Acres in West Kailua
Area of Kaneohe = 70 (Area of Kaneohe to south of Makaha) 2822 Acres			
Total of Survey on this Map 6522 Acres			

97.33.
All balances of over 5 Acres are inserted in this Map. Most of those under that amount are omitted.



For Field Measurements see Field Books, "Kaneohe, Vols. 1 & 2, 24"
For Notes of Survey, i.e. Descriptions see Survey Office Records in 127.

© 1876
W. D. Alexander, Surveyor-General